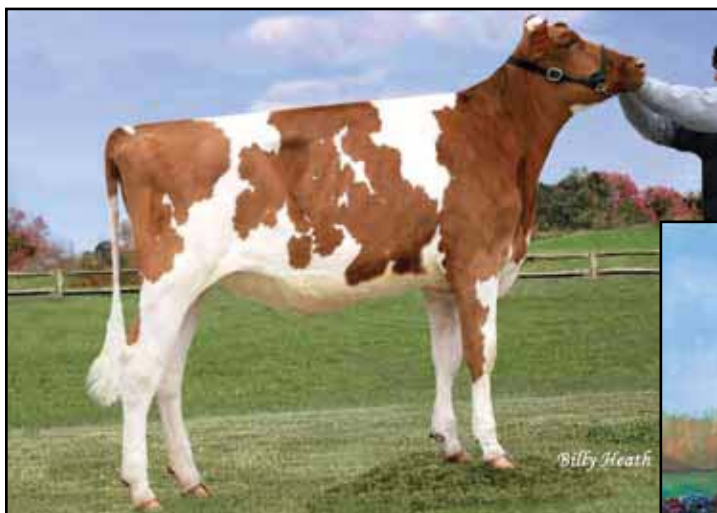


Siemers Spring Showcase



WINDSOR-MANOR RIVER-RED-ET
1st Winter Calf Maryland State Fair R&W Show 2009
(Catalog Number 60)



WINDSOR-MANOR ROMANC-RED-ET "VG-89"
Grand Champion Eastern National R&W Show 2009
(Maternal sister to Dam of Catalog Number 60)

60

WINDSOR-MANOR RIVER-RED-ET

CONSIGNOR:

Jason & Donna Myers
2500 Old New Windsor Pike
New Windsor, MD 21776-9610
410-635-2028

Great people, beautiful farm and very marketable cattle. This heifer is simply a head turner!! Consider attending the Windsor-Manor Sale on 3-5-2011!

Scientific Debonair-Red-ETS

137892772 EX-90 *TV *TL *TD
PTA +536M +2F +24P 73R 1/10
PTA +2.26T +1.75UDC +1.20FLC 70R 1/10
GTPI +1492

Windsor-Manor Raisin-Red-ET

136349664 Very Good-88 VVEVE 2y
CTPI +1437 PTA +2.54T +1.93UDC +1.42FLC
2-03 2x 365d 23,800 4.4 1056 3.6 865
4-10 2x 70d 6,314 5.8 369 3.2 202" RIP
•HM All-American R&W Winter Yearling 2006
•1st Winter Yrlg. Eastern Nat'l R&W Show 2006
•2nd Winter Yrlg. Grand Int'l R&W Show 2006
Maternal sisters:

Windsor-Manor Reva-Red-ET EX-90

Windsor-Manor Raven-Red-ET VG-87 EX(93)MS

65226188 • Born December 20, 2008

•1st Winter Calf MD State Fair R&W Show 2009

Maternal Sisters to Lot 59:

Windsor-Manor Rainet-Red-ET VG-88 EX-MS
Windsor-Manor Rachel-Red-ET VG-85 VG-MS

Ladino Park Talent-Imp-ET *RC

AUS930377 EX-ST *TV *TL
PTA -158M -27F +6P 99R 1/10
PTA +1.97T +2.46UDC +.80FLC GTPI +1464

Scientific Debutante Rae-ET *RC

132416603 Excellent-92 EEEEE GMD DOM *CV
2-02 2x 365d 32,930 4.4 1440 3.4 1132

KHW Kite Advent-Red-ET

133002953 EX-94 *TV *TL *TD
PTA -1189M -19F -27P 99R 1/10
PTA +2.40T +2.29UDC +1.56FLC GTPI +1463

Windsor-Manor Rubn Ruby-Red

207428599 Excellent-94 EEEEE 3E
7-00 2x 365d 37,290 3.4 1252 3.1 1143
4-09 2x 365d 34,940 3.3 1148 3.1 1072
3-03 2x 365d 27,270 3.3 889 3.2 863
Life: 2039d 155,280 3.4 5264 3.2 4952
•HM all-American R&W Jr. 3 Year Old 2003
•1st Jr. 3 Year Old & BU East. Nat'l R&W Sh. '03
•Five daughters nominated All-American R&W

Maternal Sisters to Dam of Lot 60:

Windsor-Manor Romanc-Red-ET VG-89
•Grand Champion Eastern Nat'l R&W Show 2009
•Res. All-American R&W Sr. 2 Year Old 2009
Windsor-Manor Rosey-Red VG-89
•Nom. All-American R&W Jr. 2 Yr Old 2008
Windsor-Manor Riki-Red VG-86
•All-American R&W Spring Heifer Calf 2006
•Nom. All-American R&W 2007 & 2008
Windsor-Manor Rosbud-Red-ET VG-87
•Nom. All-American R&W Spring Yrlg. 2007

3rd through 9th Dams:

Windsor-Manor Kemview Reddy VG-85
1-11 2x 365d 20,190 4.6 931 3.2 652
MD-Gaywinds Factor Kris-Red VG-86
2-01 2x 365d 20,360 4.4 898 3.3 674
Peaceful-Meadows Kristen-ET VG-85
2-06 2x 296d 20,020 3.7 746 2.9 579
Dream&Do Cleitus Kasey EX-91 GMD DOM
4-08 2x 365d 36,960 4.8 1783 3.2 1178
Life: 1618d 111,750 4.7 5197 3.3 3681
Burket-Falls Senic-ET *RC VG-87 DOM
7-01 2x 365d 26,110 5.1 1321 3.1 820
Burket-Falls Magnetic Susette EX-90 GMD
8-02 2x 365d 31,336 3.41 060 2.6 819
Life: 2814d 180,106 3.5 6275
Burket-Falls Elevation Sophia EX-93 4E GMD DOM
7-00 2x 365d 29,049 4.3 1256
Lifetime: 3913d 241,534 4.1 10022