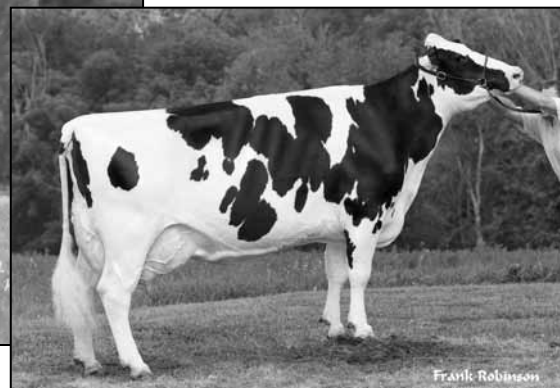


SPRINGHILL-OH CV CLOVER-ET EX-92 2E GMD DOM
2ND DAM OF LOT 2



MASPRINGHILL CHEROKEE-ET EX-90 GMD DOM
4TH DAM OF LOT 2



SPRINGHILL
7109 SR 514
BIG PRAIRIE, OH 44611
330-378-4515

Picston Shottle-ET

GBR 598172 EX-95-GBR GM 8/09 *TV *TL
PTA +1784M +86F +51P 99R 1/10
PTA +6.2PL 2.64SCS -1.5DPR
PTA +3.46T +2.64UDC +2.54FLC 99R 1/10
GTPI +2374G

Springhill-OH DB Collette

60745390 Excellent-91 EEEEE 2E
4-08 2x 365d 37820 3.8 1435 2.9 1115
2-02 3x 365d 32020 3.4 1088 2.9 930
3-05 3x 365d 29390 3.7 1076 2.9 846
Life: 1386d 127830 3.6 4621 2.9 3688

SPRINGHILL-OH S COURTNEY-ET

68781023
Born: November 5, 2009
P9 PTPI +2047 +1784M +68F +48P +4.4PL 1/10

Carol Prelude Mtoto-ET

6001001962 GM 1/08 *TV *TL
PTA +608M +29F +10P 99R 1/10
PTA +.25T +.15UDC +.60FLC GTPI +1701G

Condon Aero Sharon

5373153C EX-91-GBR *60 STAR
5-07 2x 305d 36230 4.3 1561 3.3 1179
4-00 2x 305d 25286 4.3 1508 3.4 1202

Sildahl BW Dutch Boy-ET

17058140 Excellent-90 GM 8/04 *TV *TL
PTA +1073M +19F +35P 99R 1/10
PTA -.78T -1.12UDC -1.18FLC GTPI +1468G

Springhill-PH VC Clover-ET

129446604 Excellent-92 EEEVE 2E GMD DOM *TV
7-05 2x 365d 39770 3.3 1309 2.8 1099
6-03 2x 365d 37620 3.8 1442 2.8 1055
4-04 3x 365d 37240 3.4 1273 2.9 1095
2-01 3x 365d 23200 3.6 1163 2.9 951
Life: 2381d 221210 3.6 7871 2.9 6412

3rd Dam

Springhill-OH CS Cari-ET EX-90 GMD DOM
2-02 2x 365d 30200 4.1 1231 3.3 1005

4th Dam

Maspringhill Cherokee-ET EX-90 GMD DOM
2-02 2x 365d 32650 3.5 1140 3.3 1090

5th Dam

Langacres Cleitus Jewel-ET EX-93 GMD DOM
7-11 2x 365d 41220 3.3 1342 2.8 1156
Life: 2455d 181330 3.9 7114 3.1 5644

6th Dam

Langacres Mars Holly EX-90 EX-MS GMD DOM
3-06 2x 365d 31310 3.9 1230 2.8 891

7th Dam

Langacres Glendell Heather EX-91 3E GMD DOM
8-04 2x 365d 33670 4.0 1340 2.8 954
Life: 2508d 181310 3.9 7039 2.9 4518

8th Dam

Langacres Elevation Hope EX-91 2E GMD DOM
10-5 2x 365d 31490 4.3 1350 2.8 893
Life: 3562d 205060 4.4 9093 3.0 3904

9th Dam

Dojimar Reflection Hope VG-88 DOM
3-09 2x 305d 18240 4.0 732