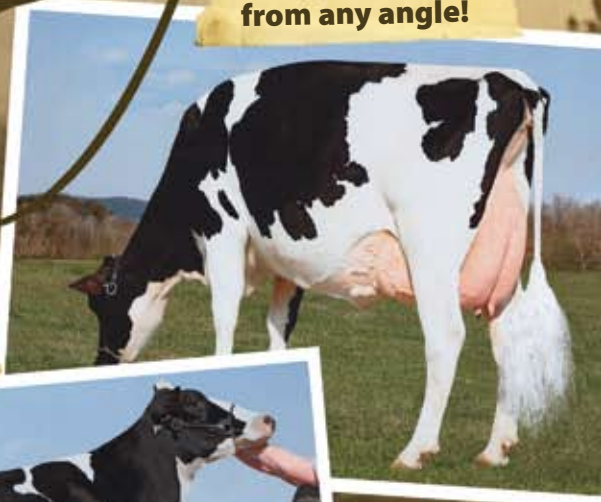


Easy on the Eyes

from any angle!



CRANBERRY-MDWS GIBSON AFTER (EX-92 EEEEE)

2-03 2X 365 20,110 3.9 776 3.2 644 | 3-07 2X 282 26,534 4.5 1203 3.1 826 (Inc.)

Dam: MD-Delight-Storm Allison-ET (2E-91 DOM)

5-07 2X 365 29,830 4.1 1229 3.2 962 | LIFE 1734 107,250 3.9 4158 3.3 3532

2nd Dam: MS Kingstead Chief Adeen-ET (2E-94 DOM)

3-05 2X 310 30,180 4.0 1209 3.4 1020 | LIFE 1382 100,760 4.0 4010 3.4 3458

3rd Dam: C Aitkenbrae Starbuck Ada (2E-94 DOM) 13-08 2X 365 25,150 3.0 764 3.4 843

After has a flush to Shottle, with 7 transfers and 7 frozen embryos; a Jasper daughter and an ultrasounded female pregnancy by Mac/Goldwyn mixed flush. After is bred to Mac.



It is difficult not to play favorites when she's a favorite of so many visitors!

Cocalico Holsteins

Dave Rama

4236 Co. HWY 18 • Delhi, NY 13753

P: 607-746-2226 • F: 607-746-2911 • daveramasr@cattlexchange.com

Paul & Kendra Zimmerman Ashton & Savannah

31 Garden Spot Road • Ephrata, PA 17522

717-721-3544 • cell 717-989-3131 • cocalicoholsteins@dejazzd.com

