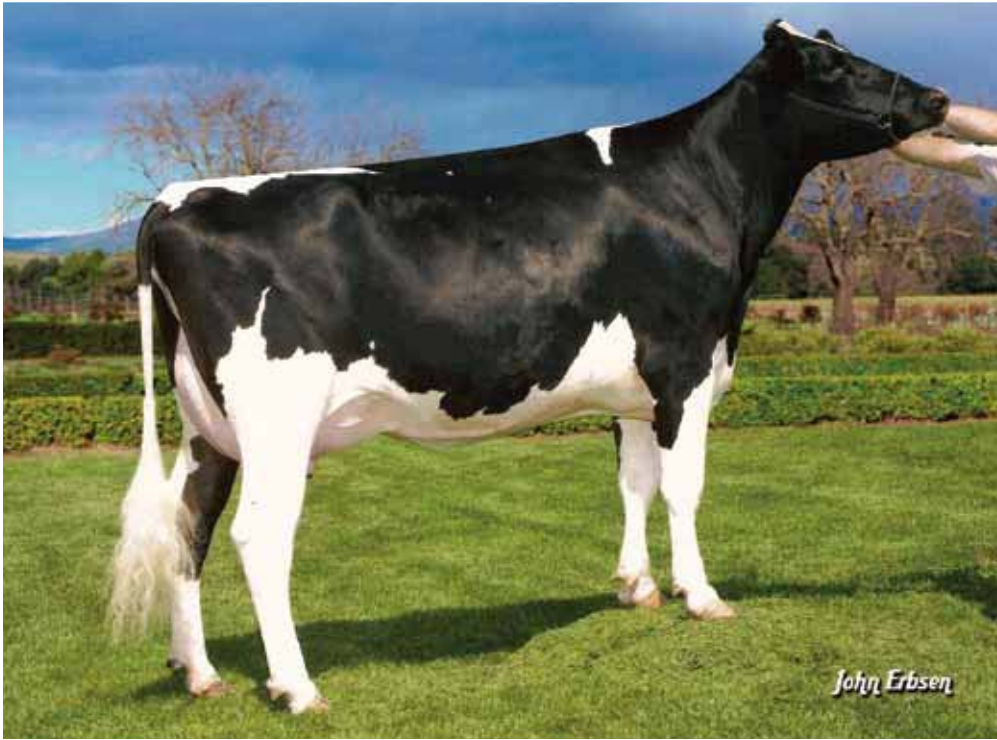


hooked on
Minnesota
lot
16



- *Early Gold Digger from the #8 GTPI Classified Shottle*
- *Maternal Sister to Choice is the #8 GTPI Million at +2189*
- *1st Choice Domain from Lucy sold for \$38,000*
- *Lucy is +2876 DGV LPI in Canada*

Morningview Shtl Lucy-ET (VG-86 VG-MS DOM)

Dam of Lot 16

1st Choice Female

From 7 Females Due October 2010

PTPI +2205

*Morningview Holsteins
c/o Tom Schmitt
21501 Cottage Hill Rd.
Durango, IA 52039
563/552-2172*

RONELEE GOLD DIGGER-ET 840 3004373270

GTPI +2221
PTA +554M +25F +24P 72%R 4/2010
PTA +654NM +7.7PL +1.0DPR 2.58SCS
PTA +2.99T +2.50UDC +1.96FLC 69%R 4/2010

MORNINGVIEW SHTL LUCY-ET 63927911

VG-86 VVV+V DOM 3-08 GTPI +2188
PTA +1737M +59F +52P 80%R 4/2010
PTA +635NM +.00%P +5.4PL 2.50SCS
PTA +2.41T +1.71UDC +1.32FLC 78%R 4/2010
2-03 2 365 32250 3.4 1088 3.4 1088
~Pregnant and due again this summer

BRAEDALE GOLDWYN 10705608C TL

CAN GP-84-3Y Extra GM GTPI +1448
PTA +555NM +.14%F +.06%P 7%US
PTA +4.6PL 2.62SCS 7%DCE
PTA +2.69T +1.38UDC +2.10FLC 99%R 4/2010
RONELEE OUTSIDE DABBLE-ET
134644585
EX-91
3-06 2 305 36850 3.6 1309 3.1 1134

PICSTON SHOTTLE-ET 598172GBR

EX-96-GBR GM GTPI +2374G
PTA +1399M +71F +40P 99%R 4/2010
PTA +551NM +.07%F +4.4PL 2.71SCS 8%DCE
PTA +3.29T +2.34UDC +2.37FLC 99%R 4/2010
#1 TPI Bull (4/08, 8/08, 1/09, 4/09, 8/09, 1/10)

MORNINGVIEW OMAN LIBBY-ET 135404694

VG-86 VVVVVV 4-11 GTPI +1884
4-00 2 365 36980 4.4 1632 3.7 1365
2-04 2 365 28540 4.6 1299 3.7 1065
Full Sister to Legend, GTPI +1898
Sire: *O-Bee Manfred Justice-ET *TR *TV *TL *TD*

3rd Dam: Crockett-Acres Drhm Mae-ET

(VG-87 VVVVV GMD DOM)
2-04 3 365 29760 4.3 1294 3.4 1026
Nom. International Cow of the Year 2009

4th Dam: Wauregan Maebell-ET

(2E-91 GMD DOM)
2-06 3 365 36440 4.1 1493 3.6 1306

5th Dam: Whittier-Farms Lead Mae-ET

(EX-95 EEEEE 3E GMD DOM)
8-07 3 357 41270 4.8 1962 3.5 1440
LIFE 1613 126960 4.3 5473 3.6 4597

6th Dam: Raymau Bstar Monica

(VG-89 EX-MS DOM)
2-01 2 146 12280 3.8 471 3.3 405

7th Dam: Juniper Jason Maria

(VG-86-3Y)
2-03 2 365 20260 4.3 869 3.6 736

8th Dam: JDM-Pride Valiant Maggie

(EX-91-7Y GMD DOM)
6-00 2 365 35540 4.1 1442 3.3 1186
LIFE 4Lact 1119919 4.2 5002 3.6 4281

9th Dam: La-Ko-Land Penstate Sadie

(VG-87-5Y GMD DOM)
7-03 2 322 23781 3.7 888 3.2 769
LIFE 8 Lact 166090 3.5 5732 3.2 2853